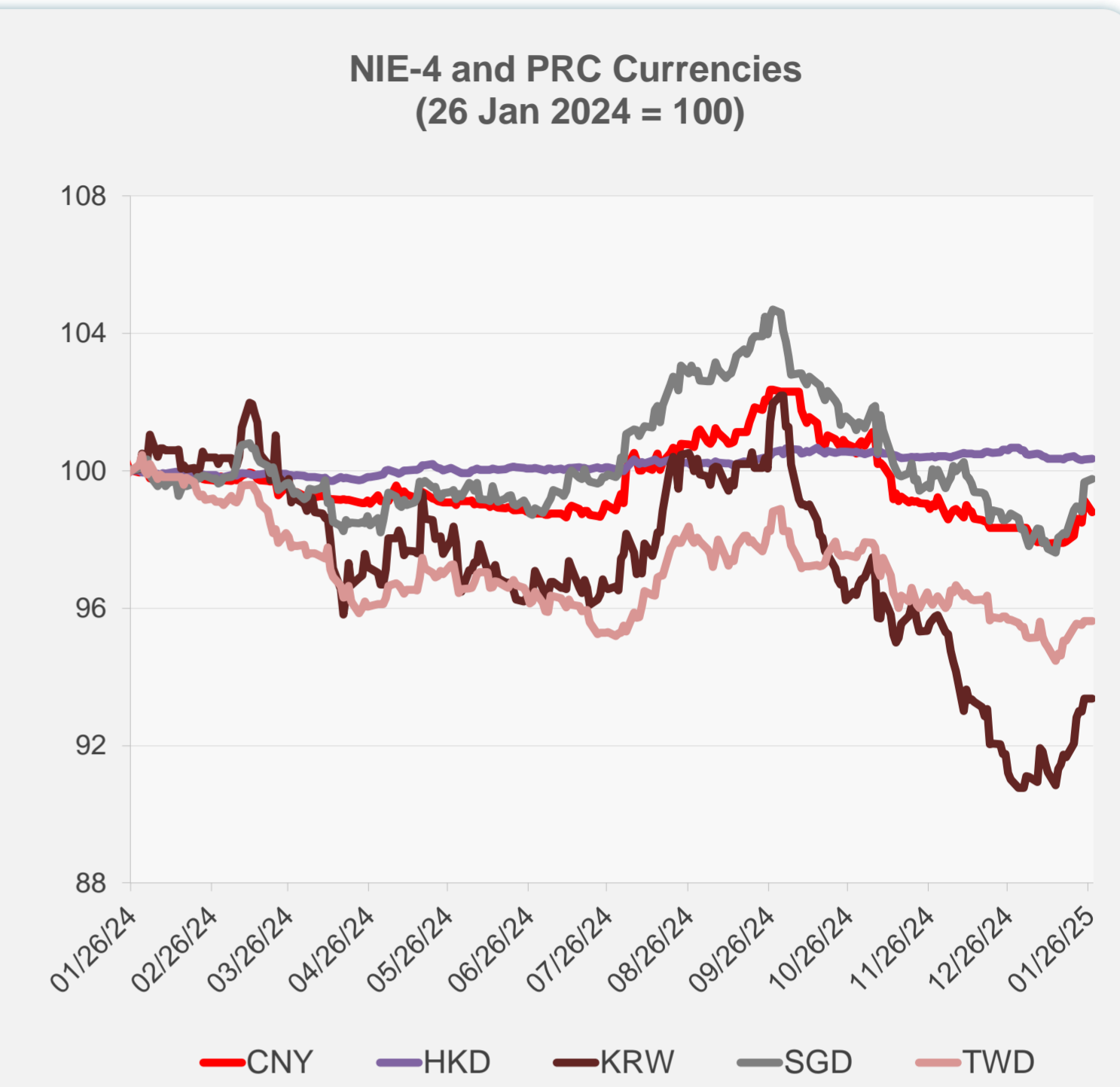
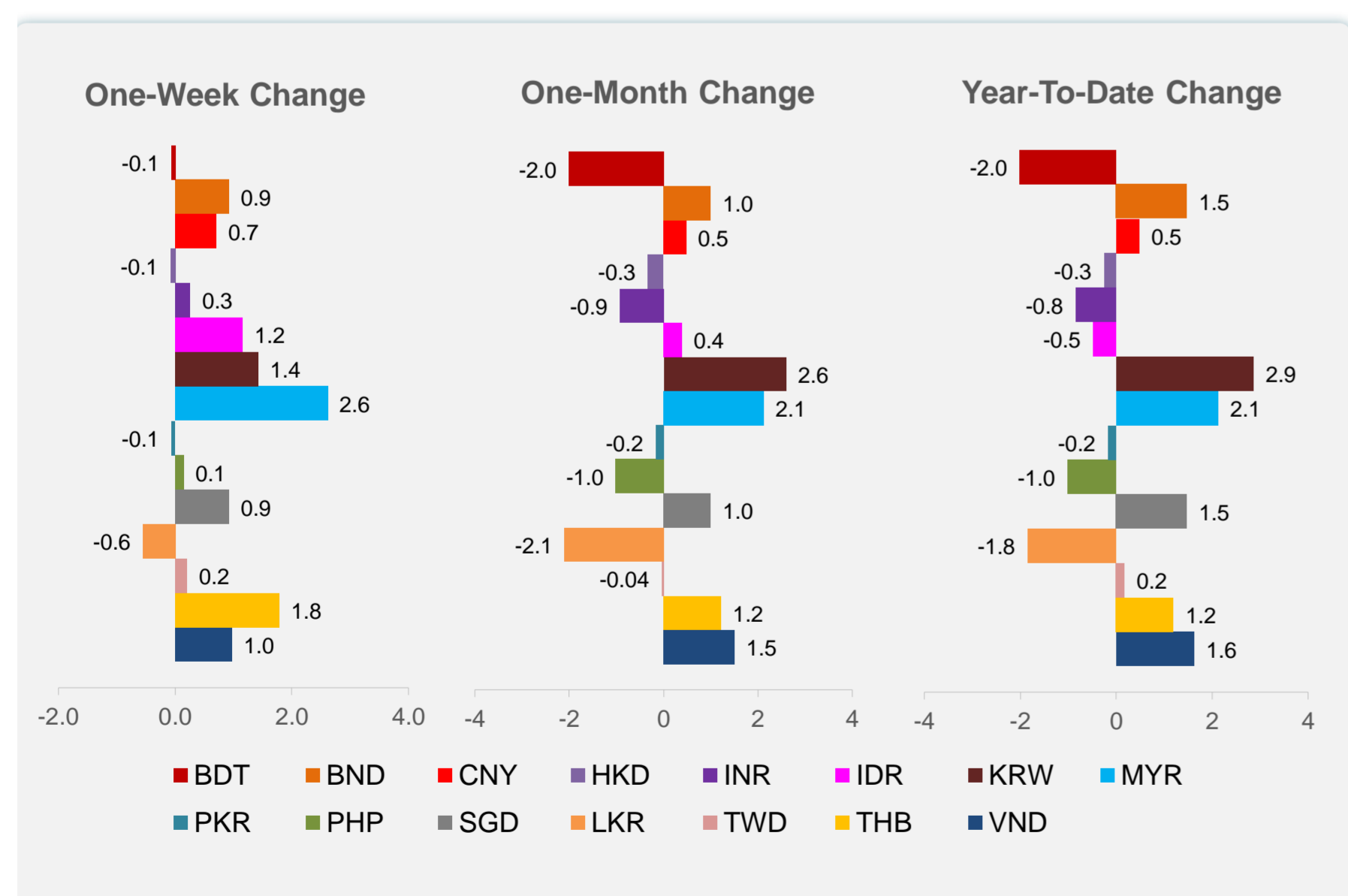
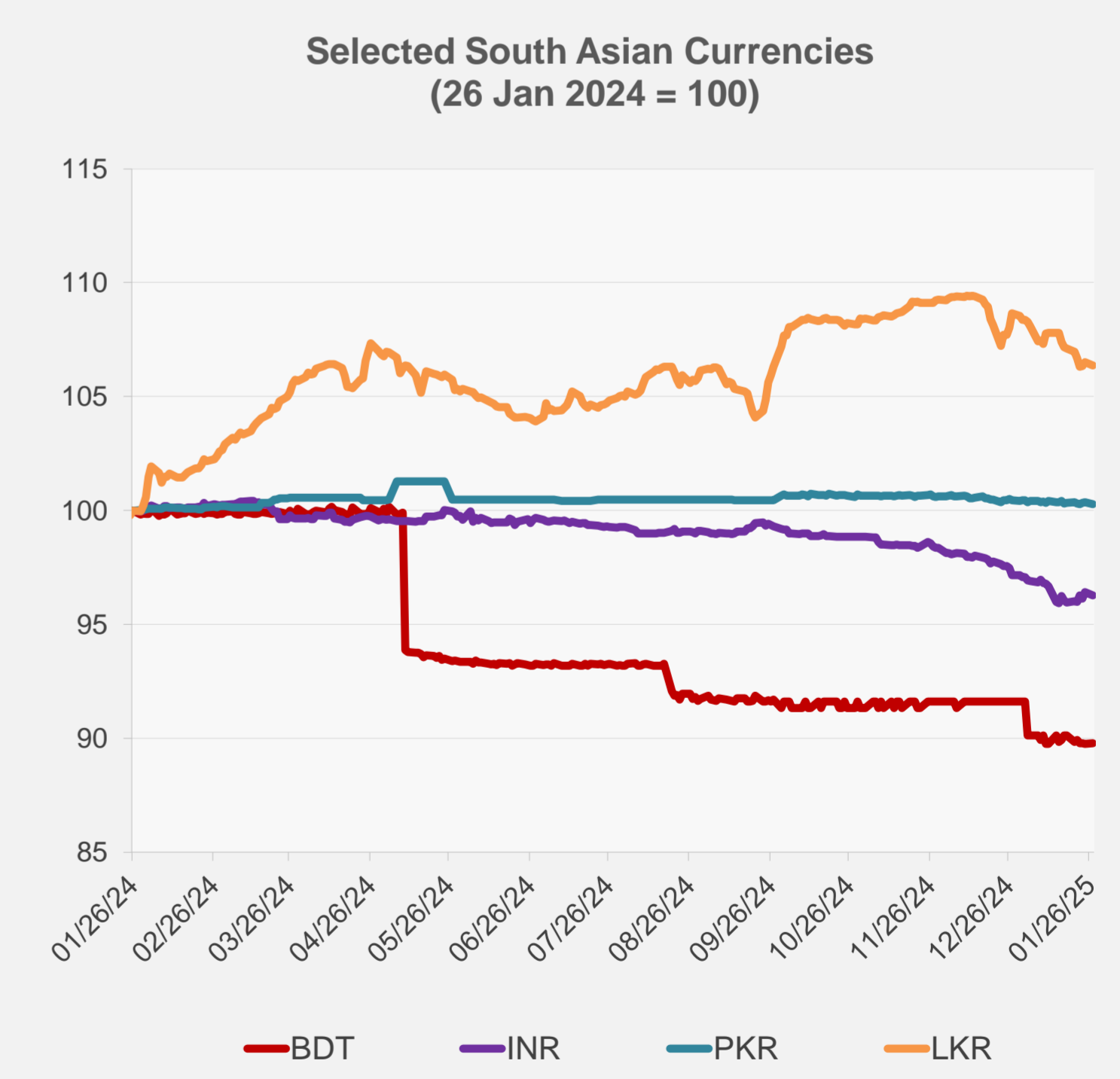
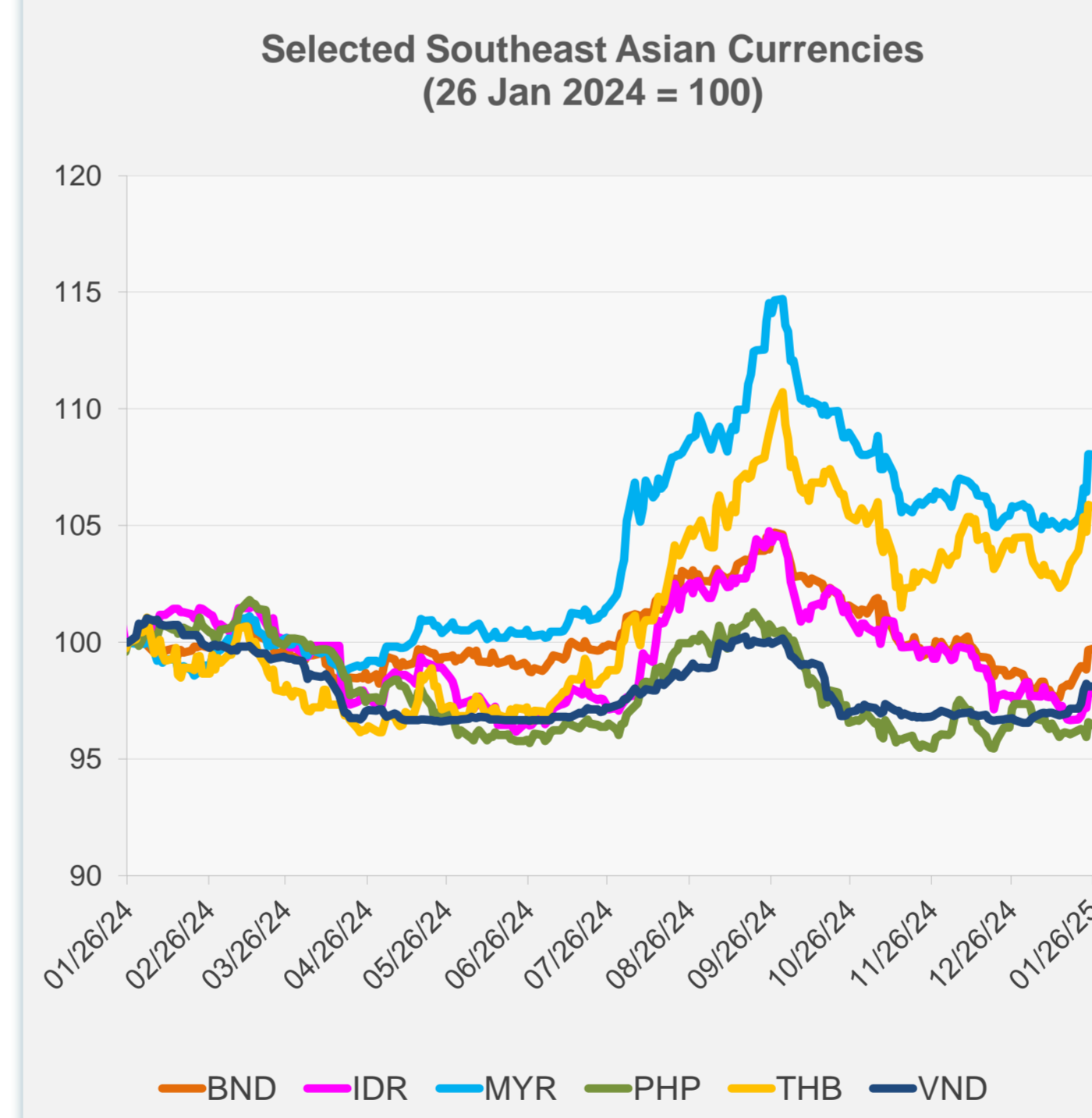


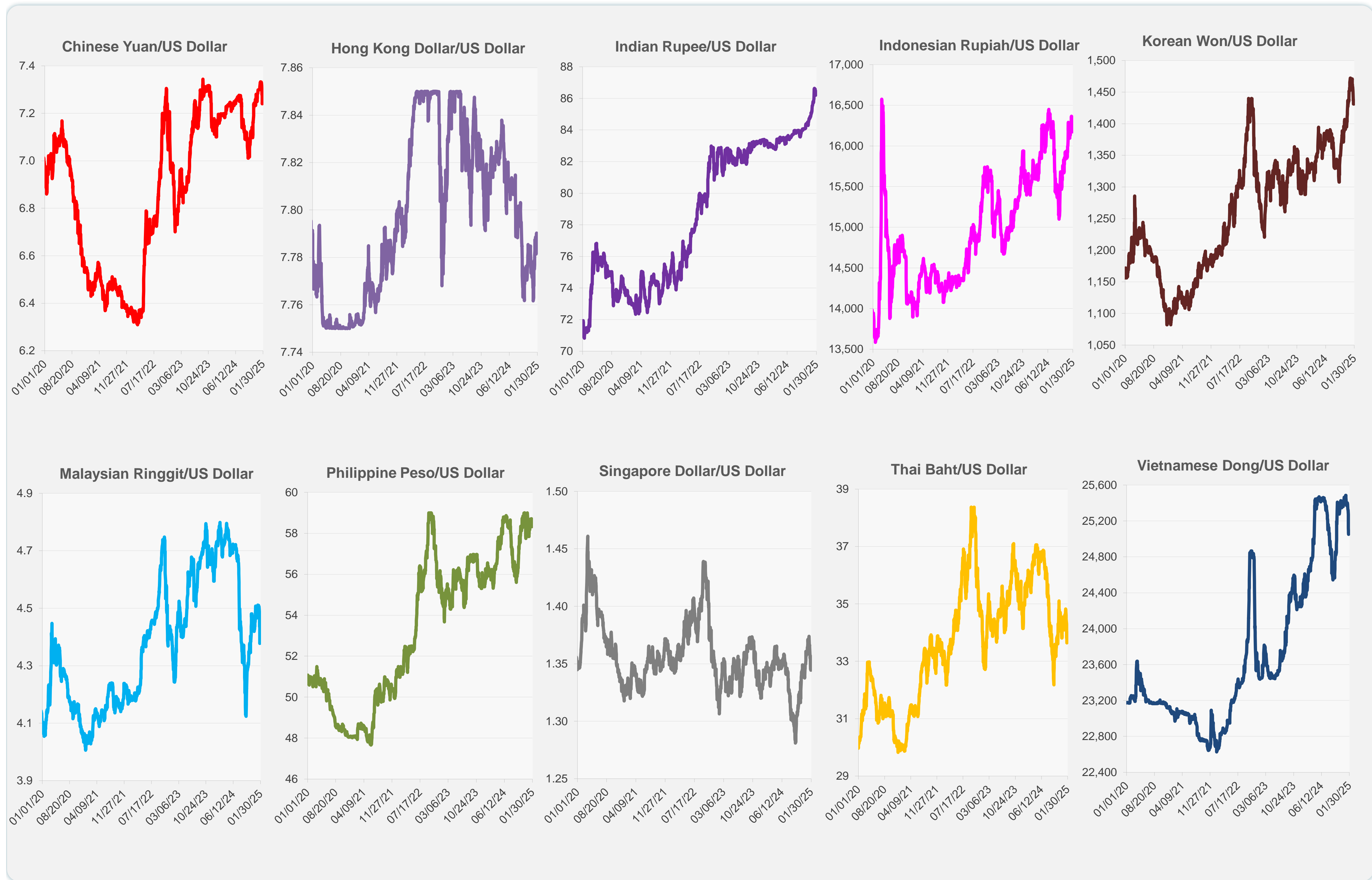
	Latest Closing	% change from Previous Day	% change from 01-Jan-25
Euro	0.95	-0.18	1.39
Japanese yen (JPY)	154.36	0.88	1.82
Bangladeshi taka (BDT)	121.95	0.04	-2.01
Brunei dollar (BND)	1.34	0.08	1.47
Chinese yuan (CNY)	7.26	-0.33	0.48
Hong Kong dollar (HKD)	7.79	0.01	-0.25
Indian rupee (INR)	86.34	-0.16	-0.84
Indonesian rupiah (IDR)	16,172.50	0.00	-0.48
Korean won (KRW)	1,431.20	0.00	2.86
Malaysian ringgit (MYR)	4.38	-0.02	2.12
Pakistan rupee (PKR)	278.85	-0.09	-0.17
Philippine peso (PHP)	58.44	-0.19	-1.01
Singapore dollar (SGD)	1.34	0.08	1.47
Sri Lanka rupee (LKR)	298.50	-0.12	-1.84
Taipei,China NT dollar (TWD)	32.73	0.00	0.17
Thai baht (THB)	33.69	-0.15	1.19
Vietnamese dong (VND)	25,078.00	0.00	1.62



NIE = Newly Industrialized Economies



Note: Negative/Decreasing values indicate depreciation of local currency, and positive/increasing values indicate appreciation.
Source: ADB calculations using data from Haver Analytics.

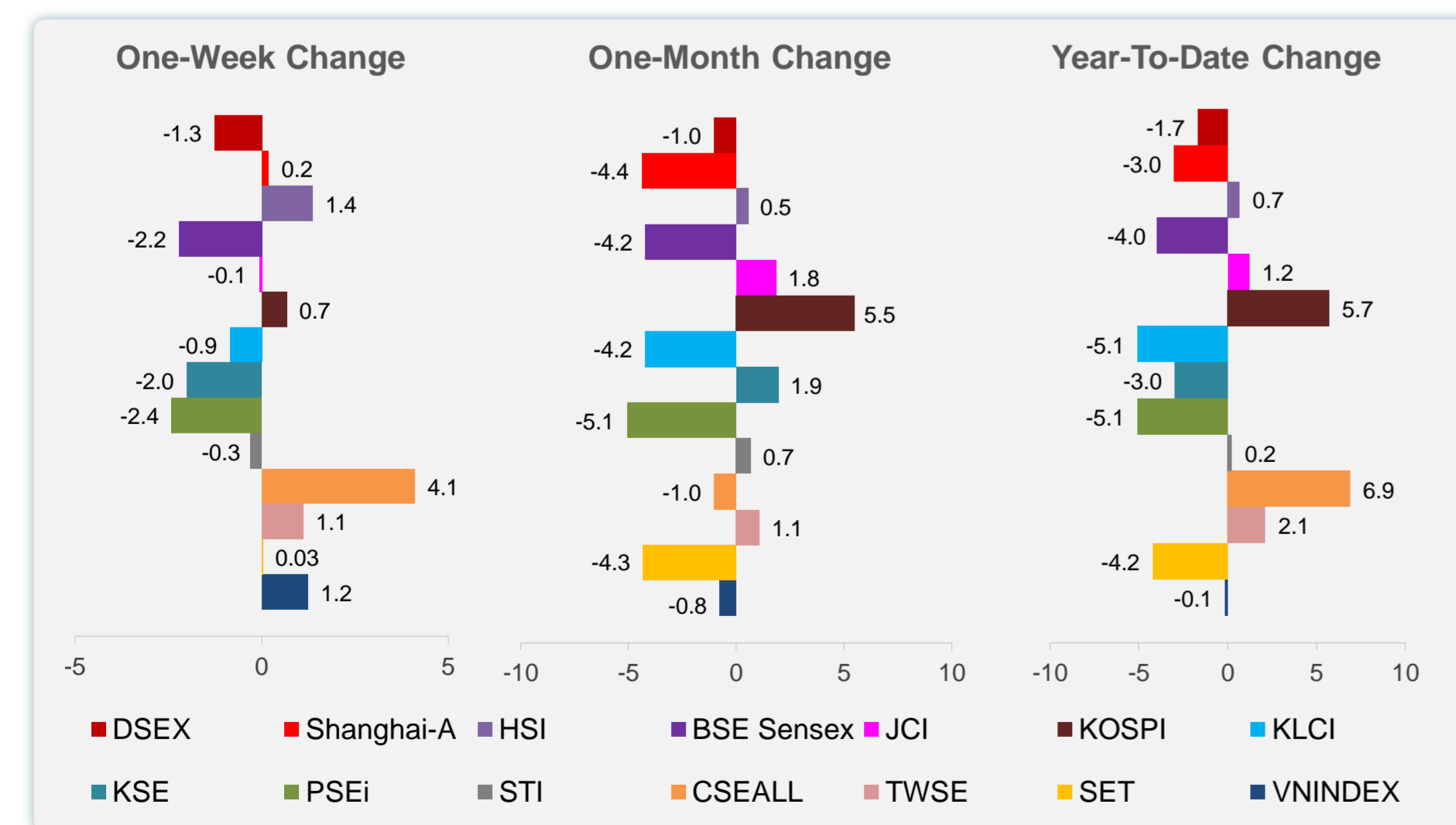
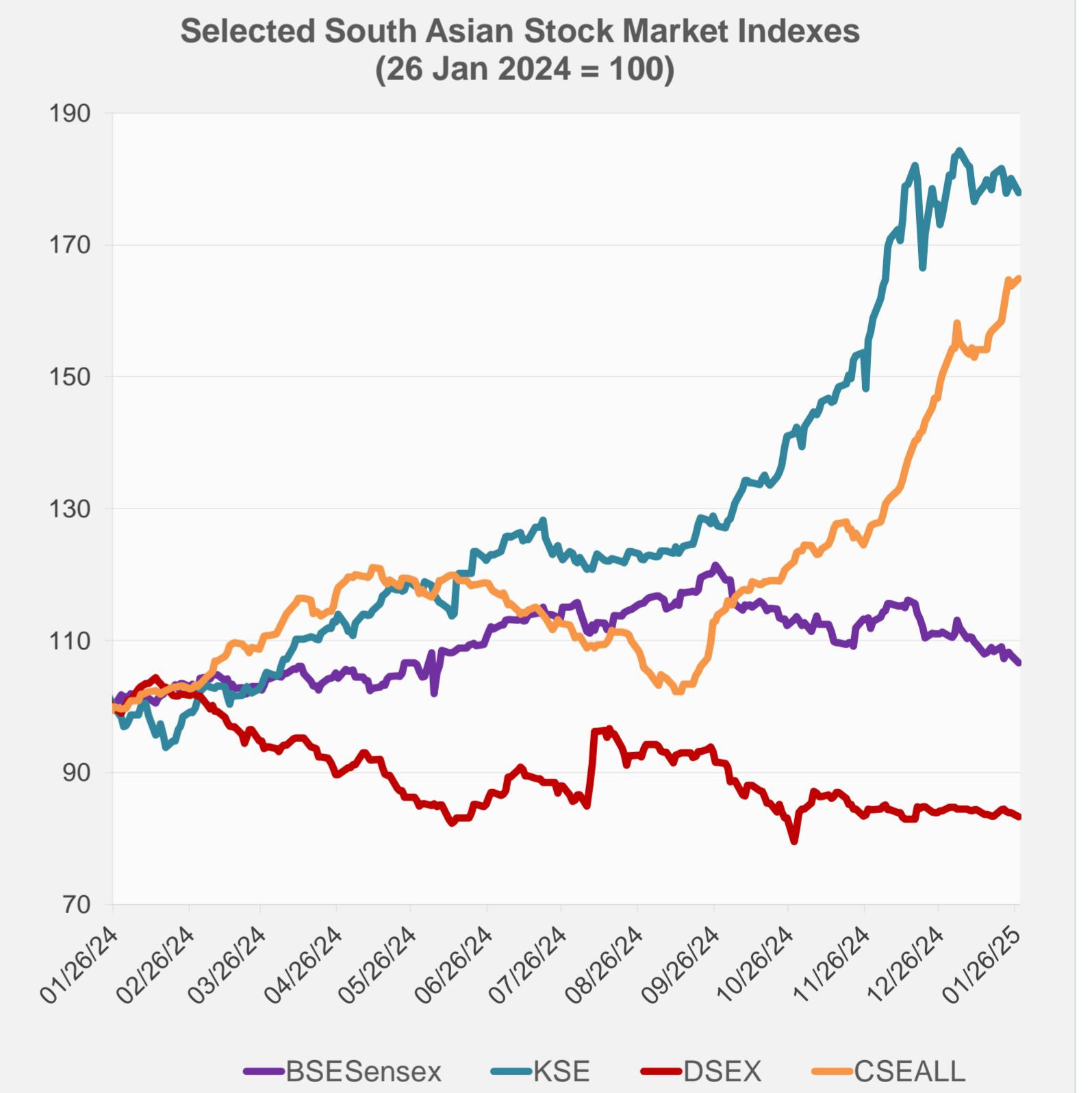
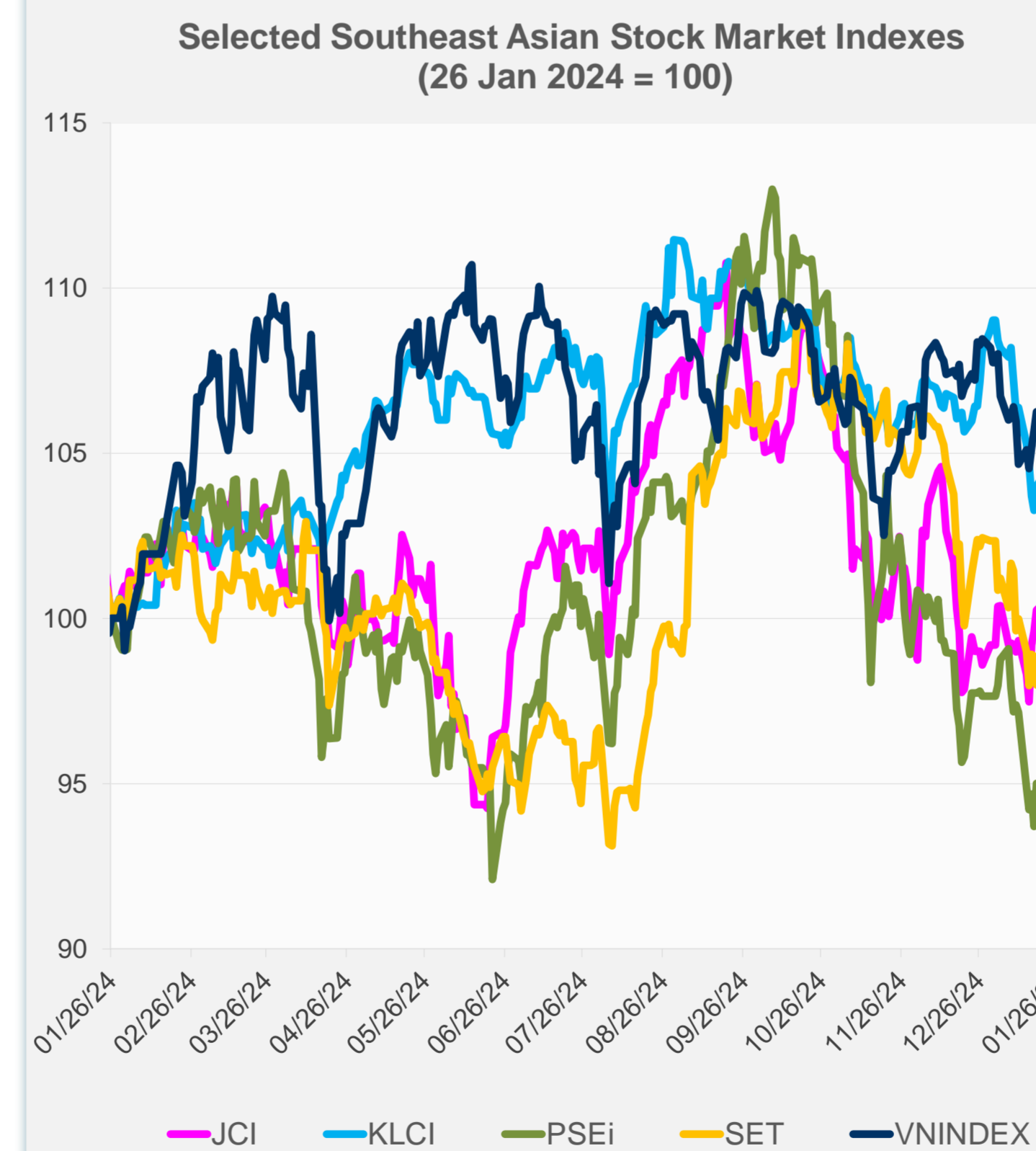
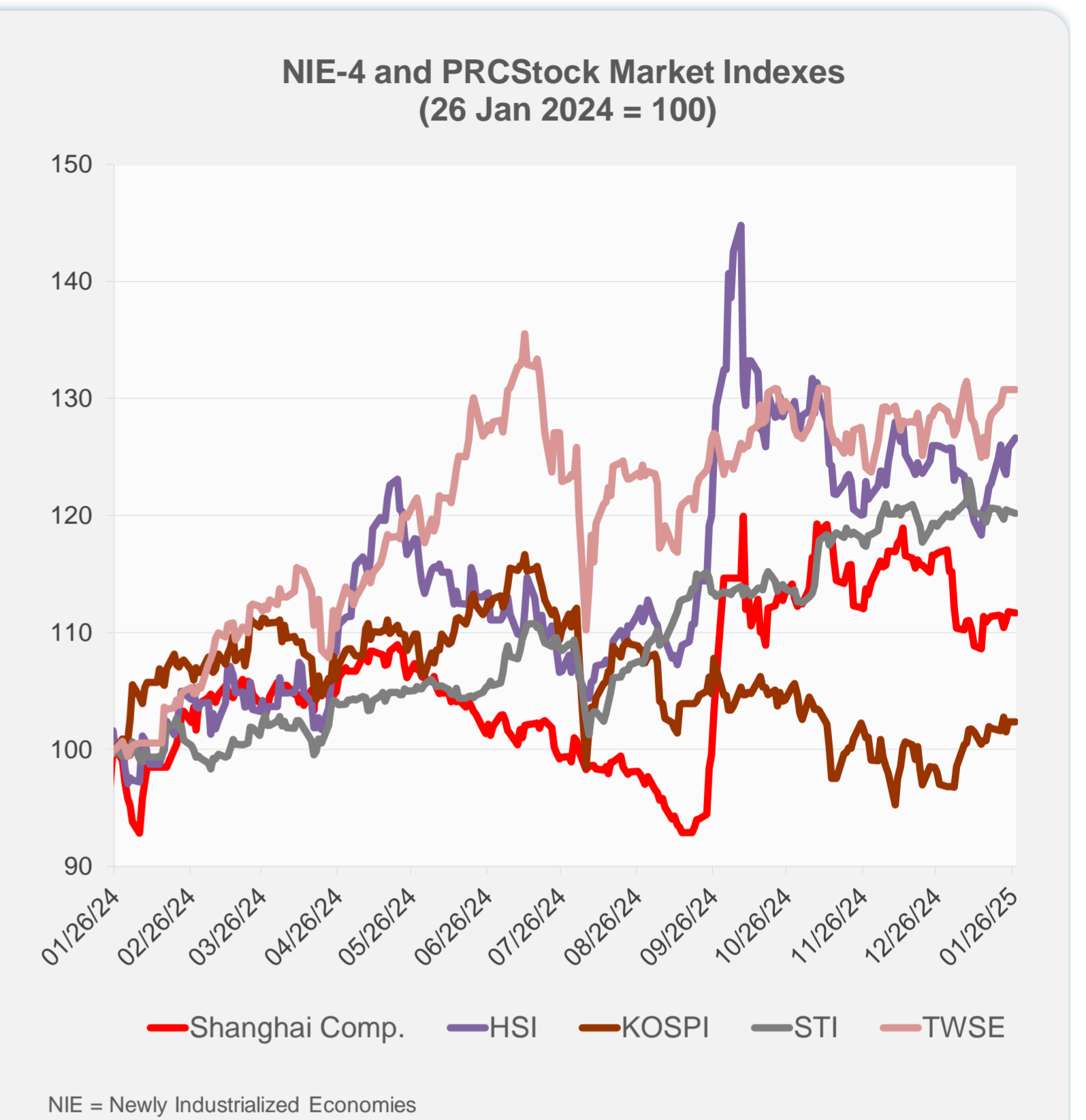
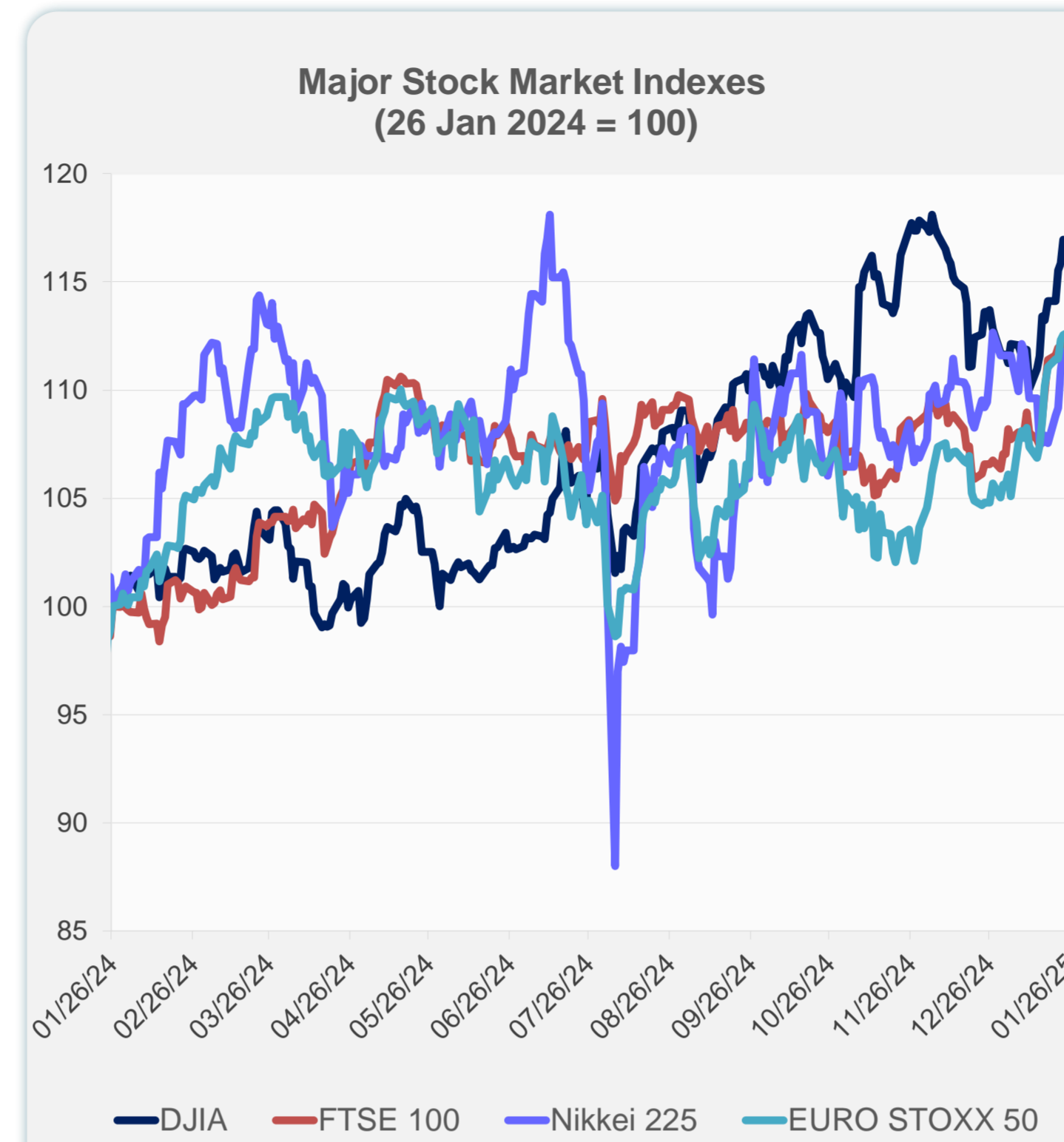


Source: Haver Analytics.

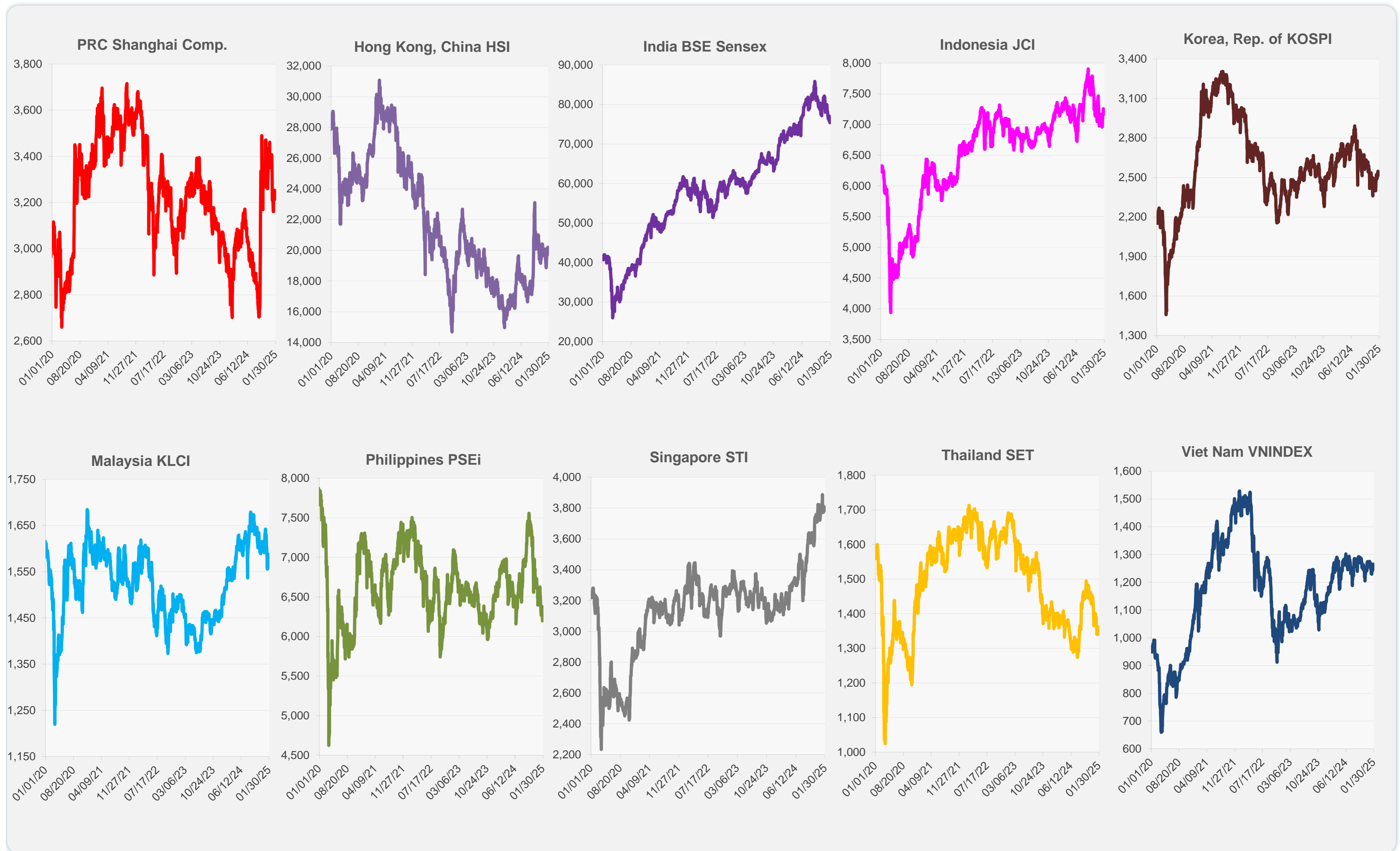
Daily Market Watch
STOCK INDEXES

28 January 2025, 9:00 AM Manila

	Latest Closing	% change from Previous Day	% change from 01-Jan-25
US Dow Jones Ind Avg	44,713.58	0.65	5.10
US NASDAQ	19,341.83	-3.07	0.16
US S&P 500	6,012.28	-1.46	2.22
UK FTSE 100	8,503.71	0.02	4.05
EURO STOXX 50	5,188.45	-0.59	5.97
Japan NIKKEI 225	39,565.80	-0.92	-0.82
Bangladesh DSEX	5,130.06	-0.71	-1.69
PRC Shanghai Comp.	3,250.60	-0.06	-3.02
Hong Kong, China HSI	20,197.77	0.66	0.69
India BSE Sensex	75,366.17	-1.08	-4.00
Indonesia JCI	7,166.06	0.00	1.22
Korea, Rep. of KOSPI	2,536.80	0.00	5.72
Malaysia KLCI	1,558.97	-0.94	-5.08
Pakistan KSE 100	113,520.32	-1.18	-2.98
Philippines PSEi	6,196.88	-1.58	-5.08
Singapore STI	3,796.71	-0.20	0.24
Sri Lanka CSEALL	17,044.67	0.75	6.90
Taipei, China TWSE	23,525.41	0.00	2.13
Thailand SET	1,340.94	-0.97	-4.23
Viet Nam VNINDEX	1,265.05	0.00	-0.14



Sources: ADB calculations using data from CEIC Data Company and Haver Analytics.



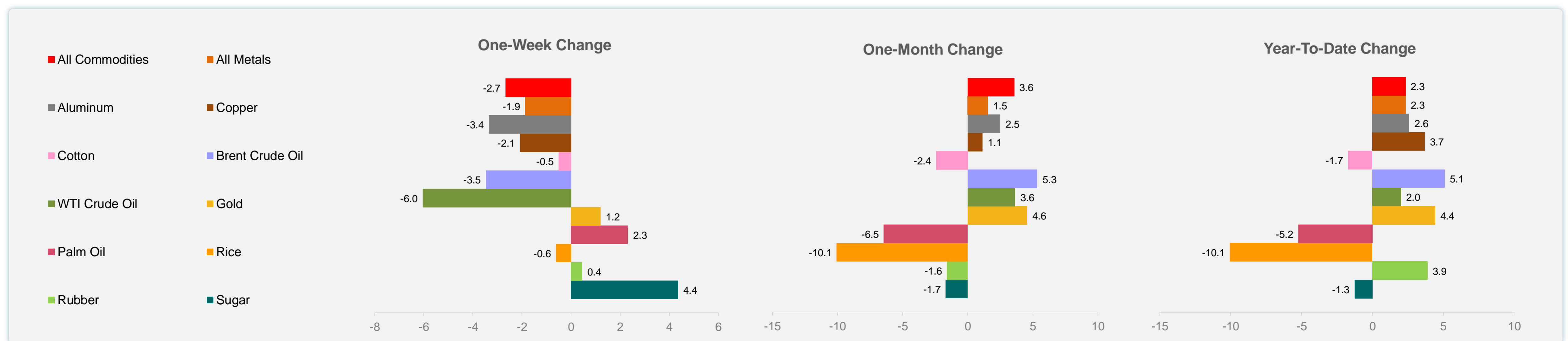
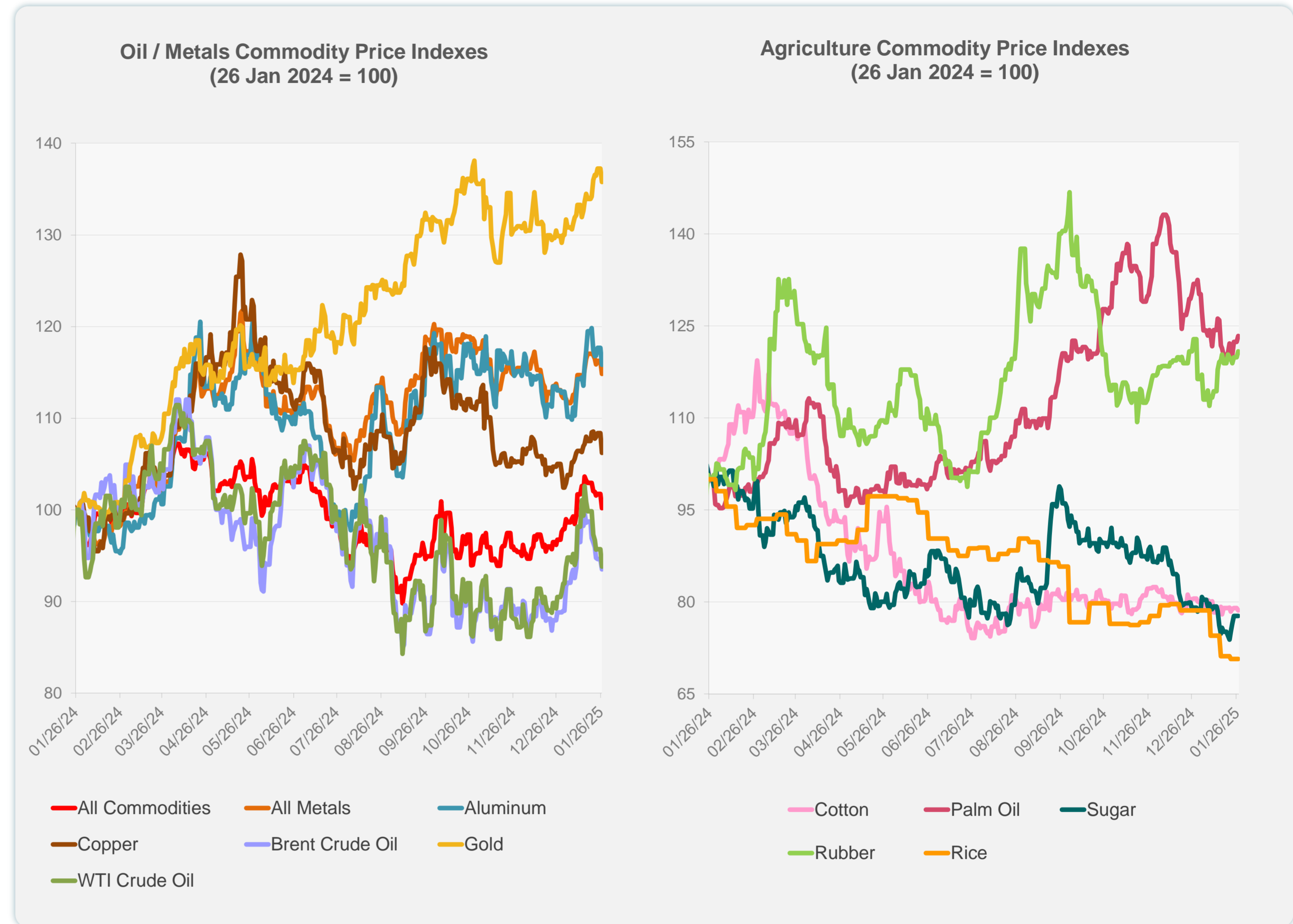
Sources: CEIC Data Company and Haver Analytics.

Daily Market Watch
COMMODITY PRICES

28 January 2025, 9:00 AM Manila

	Unit	Latest Closing	% change from Previous Day	% change from 01-Jan-25
S&P All Commodities	US\$	562.49	-1.51	2.34
S&P All Metals	US\$	314.58	-1.23	2.34
Aluminum	US\$/metric ton	2,592.59	-1.56	2.60
Copper	US\$/metric ton	8,972.06	-2.01	3.69
Cotton	US cents/lb	64.77	-0.52	-1.71
Brent Crude Oil	US\$/barrel	77.89	-1.17	5.10
WTI Crude Oil	US\$/barrel	73.17	-2.00	2.02
Gold	US\$/troy oz	2,740.81	-1.07	4.43
Palm Oil	US\$/metric tonne	1,042.58	0.80	-5.23
Rice ¹	US\$/metric ton	483.00	0.00	-10.06
Rubber ²	US\$/kg	246.00	0.82	3.89
Sugar	US cents/lb	17.97	0.00	-1.26

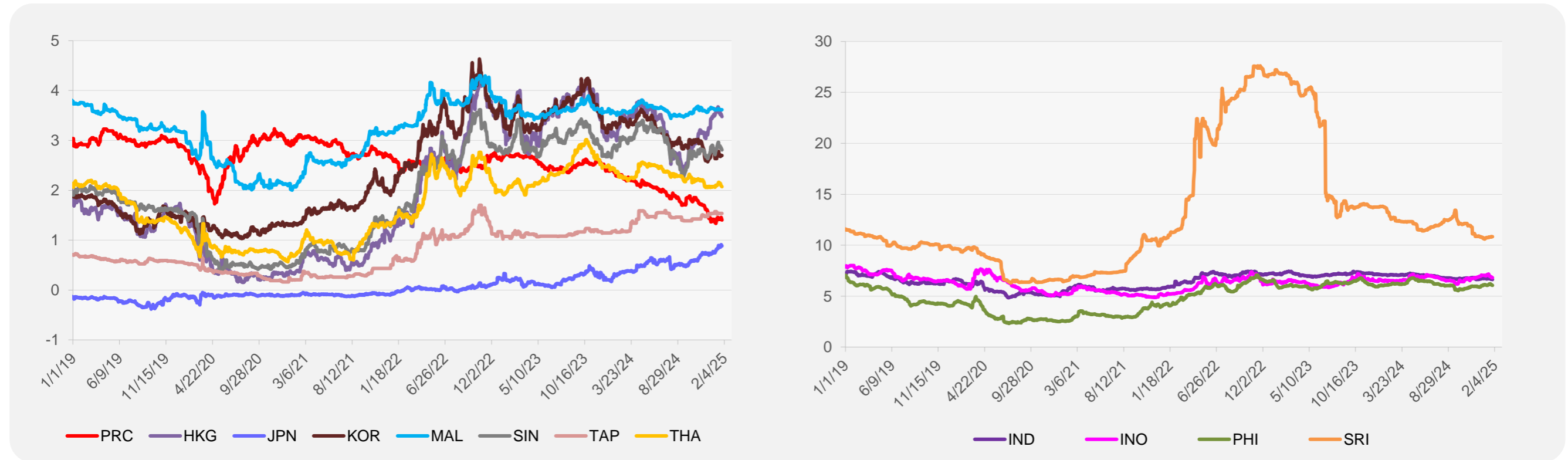
¹ Latest closing price from 22 January 2025.
² Singapore Exchange, Ribbed Smoked Sheet Rubber.



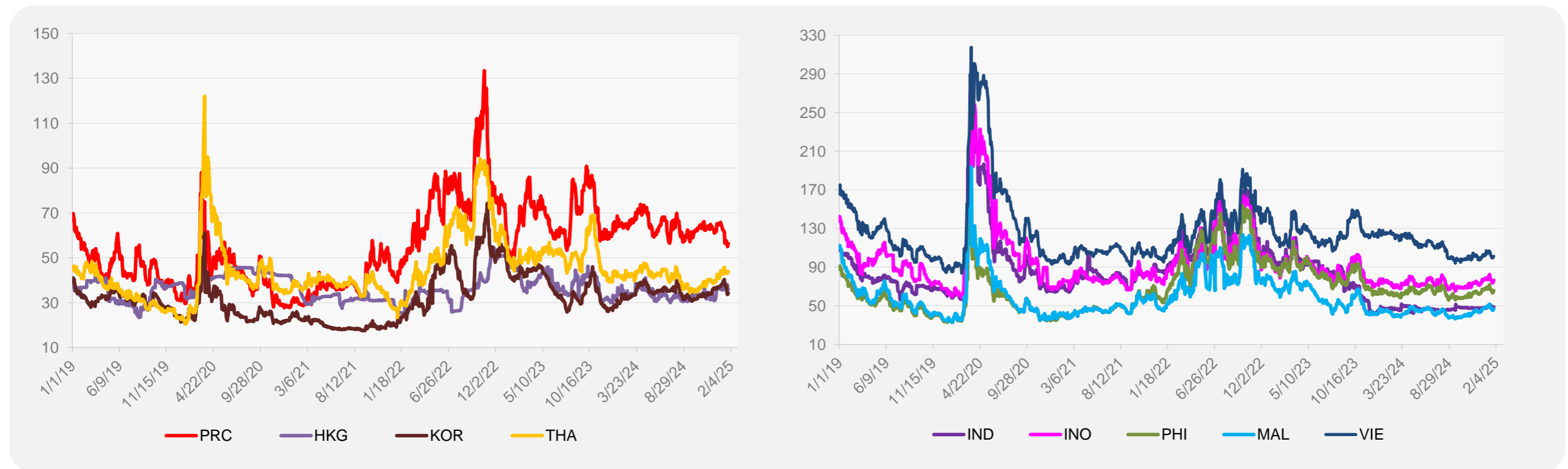
Source: ADB calculations using data from Bloomberg.

ASIA REGIONAL INTEGRATION CENTER
Regional Cooperation and Integration Division (ERIC)
Economic Research and Development Impact Department (ERDI)

5-YEAR LOCAL CURRENCY GOVERNMENT BOND YIELDS (%)



5-YEAR CREDIT DEFAULT SWAP¹



¹ In USD and based on sovereign bonds.
Source: ADB calculations using data from Bloomberg.